

DESCRIPTION

Drain valve

CONSTRUCTION

Solenoid valve series 106 with:

- Filter ball in chromium plated brass and stainless steel strainer, NBR seal
- Connection : inlet G1/2", outlet G3/8" or G1/2"
- Timer ACL mod.11303000
- Connector DIN 43650A code 1034900A



2

FEATURES

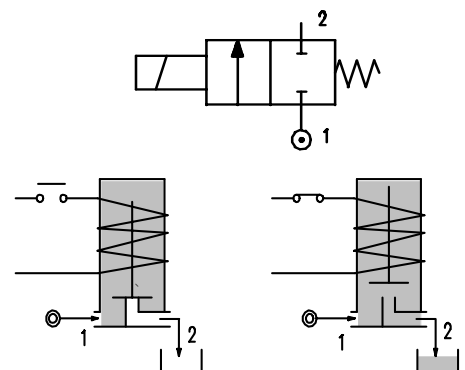
Maximum allowable pressure 80 bar

Maximum fluid viscosity 25cSt (mm²/s)

Ambient temperature : with class F coil -10°C +55°C
with class H coil -10°C +80°C

Protection class IP65

OPTIONS : Electroless nickel plating on the valve body
Overmoulded DIN cable connector



CODE ① ②	Connection G ISO 228	Orifice mm	KV m ³ /h	Differential pressure bar			Nominal power			Coil		Seal ①	Temp. range °C
				Min	Max		AC Inrush	VA Holding	DC Watt	Series	Width		
					AC	DC							
S106BV30///.....	1/4"	3	0.18	0	14	6	20	15	10	2	30	FPM=V	-10 +130
S106BV40///.....	1/4"	4	0.26	0	7	3	20	15	10	2	30		
S106C.....30///.....	3/8"	3	0.25	0	15	10	20	15	10	2	30	NBR=B	-10 +90
S106C.....35///.....	3/8"	3.5	0.32	0	10	8	20	15	10	2	30		
S106C.....40///.....	3/8"	4	0.36	0	8	5	20	15	10	2	30		
S106C.....45///.....	3/8"	4.5	0.41	0	6.5	3.5	20	15	10	2	30		
S106D.....30///.....	1/2"	3	0.25	0	15	10	20	15	10	2	30		
S106D.....35///.....	1/2"	3.5	0.32	0	10	8	20	15	10	2	30		
S106D.....40///.....	1/2"	4	0.36	0	8	5	20	15	10	2	30		
S106D.....45///.....	1/2"	4.5	0.41	0	6.5	3.5	20	15	10	2	30		
S106C.....30///.....	3/8"	3	0.25	0	25	24	40	30	27	5	36		
S106C.....35///.....	3/8"	3.5	0.32	0	20	19	40	30	27	5	36		
S106C.....40///.....	3/8"	4	0.36	0	16	15	40	30	27	5	36		
S106C.....45///.....	3/8"	4.5	0.41	0	14	13	40	30	27	5	36		
S106D.....30///.....	1/2"	3	0.25	0	25	24	40	30	27	5	36		
S106D.....35///.....	1/2"	3.5	0.32	0	20	19	40	30	27	5	36		
S106D.....40///.....	1/2"	4	0.36	0	16	15	40	30	27	5	36		
S106D.....45///.....	1/2"	4.5	0.41	0	14	13	40	30	27	5	36		

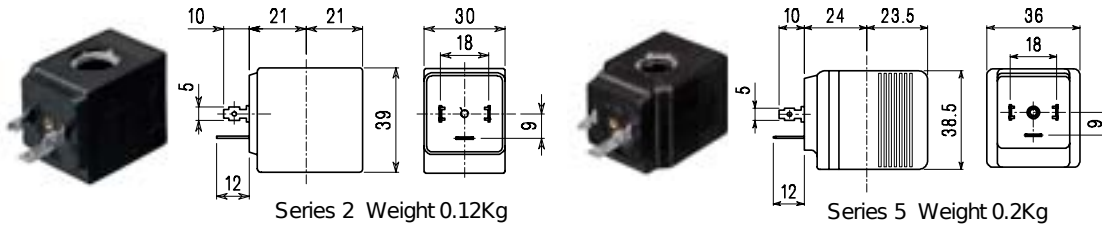
- ① Seal
- ② Coil

Example: S106CB25///201 NBR seal
Coil 24V DC

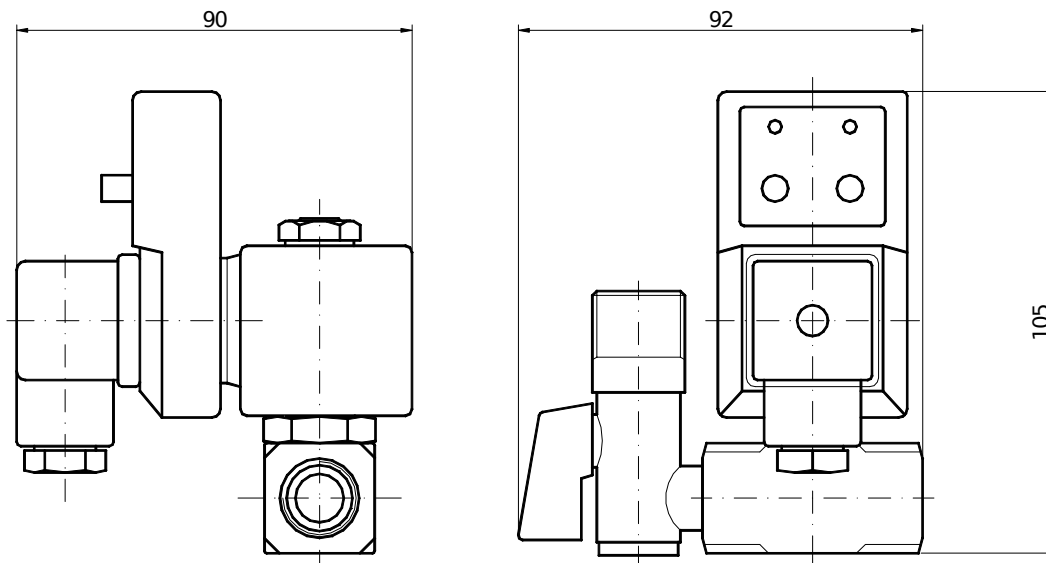
COILS	Alternating Current ~50/60Hz Volt							Direct Current Volt			Electrical connection	Connectors
	12	24	48	110	220 230	240	380	12	24	48		
Series 2 Width 30 Code ②	20A	20B	20C	20D	20E	20F	20G	200	201	202	DIN 43650A	PG9 code 10349000
Series 5 Width 36 Code ②	52A	52B	52C	52D	52E	52F	52G	521	521	522	DIN 43650A	PG11 code 10349001

DESCRIPTIONS
 Insulation class
 Series 2=F Series 5=H
 Voltage tolerance
 AC +15% -10%
 DC ±10%
 Protection class
 IP65 with connector fitted
 IP00 without connector
 Continuous service ED100%

OPTIONS
 Class H insulation (series 2)
 Cable attached
 Special coil voltages
 Special coil powers



OVERALL DIMENSION



Weight with coil series 2 = 0.52 Kg
 Weight with coil series 5 = 0.60 Kg