

**DESCRIPTION**

Solenoid valve 2 way normally closed in stainless steel AISI 316 with servo-assisted diaphragm and explosion proof coil certified: CESI 03 ATEX 344 ExII2G/D EEx "d" IIC T6



**VALVE CONSTRUCTION**

Body and cover                      Stainless steel  
 Seal material                        FPM

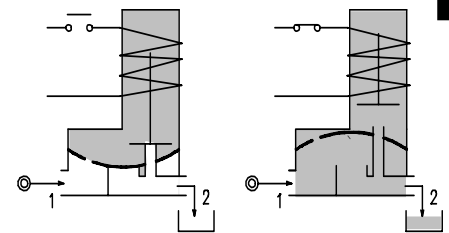
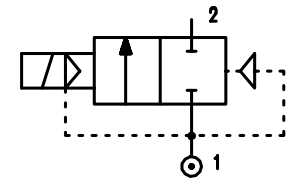
**EXPLOSION PROOF CONSTRUCTION**

Housing                                Red colour alloy  
 Electrical connection            ½" NPT

**FEATURES**

Minimum differential pressure 0.15 bar  
 Maximum allowable pressure 25 bar  
 Maximum fluid viscosity 25cSt (mm<sup>2</sup>/s)  
 Ambient temperature :    -10°C +40°C  
 Preferred mounting position with vertical coil above

**OPTIONS :** Version with slow closing diaphragm



**4**

**NOTE:** The solenoid valve is suitable for contact with **NOT** potential explosive medias only

| CODE<br>①        | Connection<br>G<br>ISO 228 | Orifice<br>mm | KV<br>m <sup>3</sup> /h | Differential pressure<br>bar |     |    | Nominal power |    | Coil ①<br>Series | Seal  | Temp.<br>range<br>°C |
|------------------|----------------------------|---------------|-------------------------|------------------------------|-----|----|---------------|----|------------------|-------|----------------------|
|                  |                            |               |                         | Min                          | Max |    | AC<br>Holding | DC |                  |       |                      |
|                  |                            |               |                         |                              | AC  | DC |               |    |                  |       |                      |
| A177CV12/1/..... | 3/8"                       | 12            | 2.2                     | 0.15                         | 15  | 15 | 12VA          | 8W | A6               | FPM=V | -10 +130             |
| A177DV12/1/..... | 1/2"                       | 12            | 2.5                     | 0.15                         | 15  | 15 |               |    |                  |       |                      |
| A177EV18/1/..... | 3/4"                       | 18            | 5.5                     | 0.15                         | 13  | 13 |               |    |                  |       |                      |
| A177FV25/1/..... | 1"                         | 24            | 10.2                    | 0.15                         | 10  | 10 |               |    |                  |       |                      |

① Coil

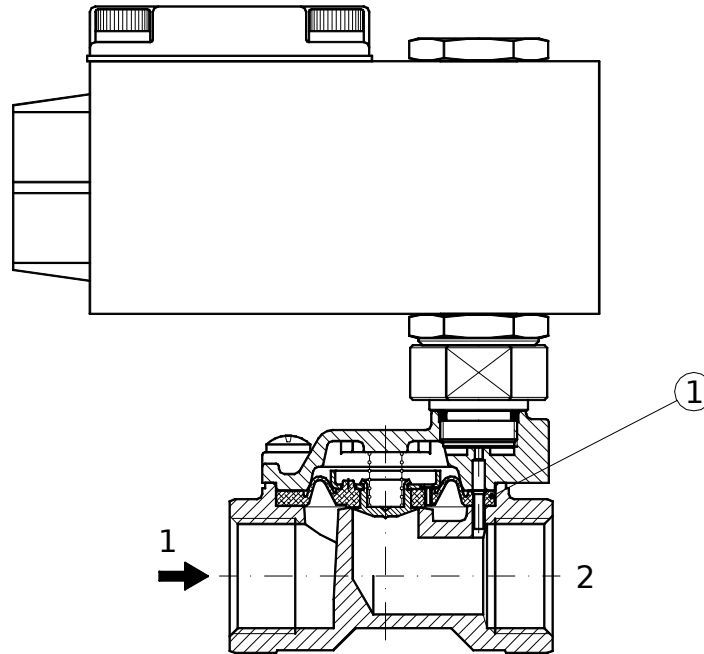
Example: A177DV12/1/A6E FPM seal  
 Coil 230V 50-60Hz



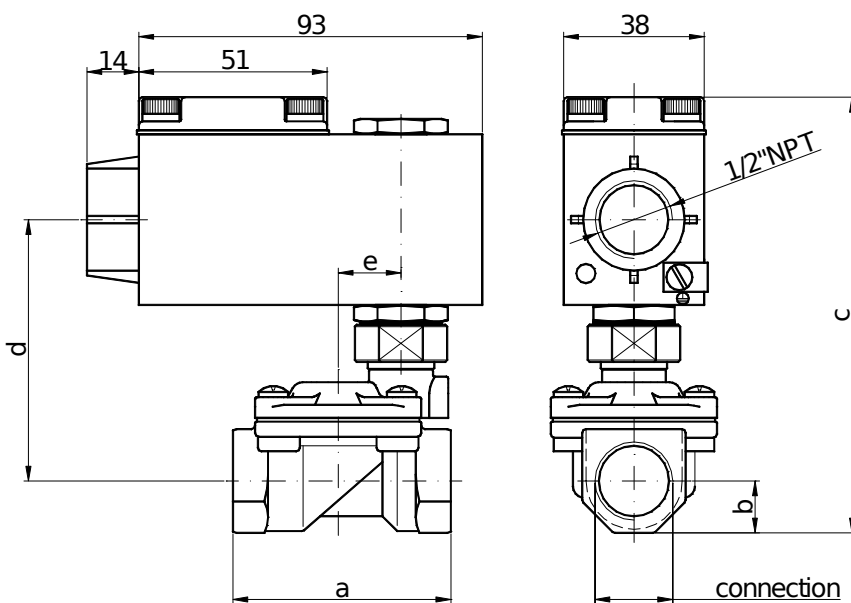
| COILS                      | Alternating Current<br>~50/60Hz<br>Volt |            |            |            | Direct Current<br>Volt |            |            | Electrical<br>connection |
|----------------------------|---|------------|------------|------------|------------------------|------------|------------|--------------------------|
|                            | 24                                      | 48         | 110        | 220<br>230 | 12                     | 24         | 48         |                          |
| Series <b>A6</b><br>Code ① | <b>A6B</b>                              | <b>A6C</b> | <b>A6D</b> | <b>A6E</b> | <b>A60</b>             | <b>A61</b> | <b>A62</b> | 1/2" NPT                 |

**DESCRIPTION**  
Voltage tolerance  
AC +15% -10%  
DC ±10%  
Protection class IP66

**SPARE PARTS LIST**  
1. Diaphragm assembly



**OVERALL DIMENSION**



| CONNECTION | a  | b  | c   | d    | e    | Weight<br>Kg |      |
|------------|----|----|-----|------|------|--------------|------|
| G3/8"      | 12 | 59 | 11  | 118  | 70   | 17           | 1.11 |
| G1/2"      | 59 | 13 | 118 | 70   | 17   | 1.12         |      |
| G3/4"      | 79 | 18 | 127 | 75.5 | 22.2 | 1.55         |      |
| G1"        | 96 | 20 | 141 | 88   | 30.2 | 2.15         |      |