

DESCRIPTION

Solenoid valve 3 way direct acting with dry armature.
No metal parts in contact with the media.

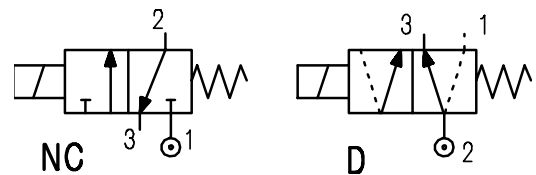
CONSTRUCTION

Body Acetal copolymer
Seal material NBR



FEATURES

Maximum allowable pressure 0.5 bar
Maximum fluid viscosity 25cSt (mm²/s)
Ambient temperature: -10°C +45°C
Maximum fluid temperature +50°C
Universal mounting position



3

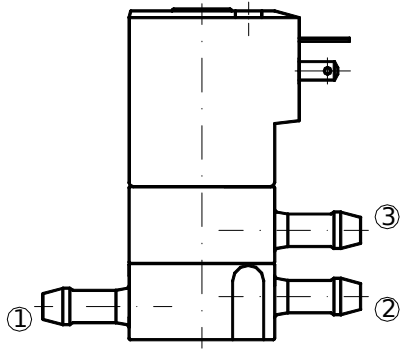
ELECTRICAL OPERATING FEATURES

Duty cycle : ED100%
Insulation class : F
Voltage tolerance : ±5%
Protection class to IP 65 with connector fitted

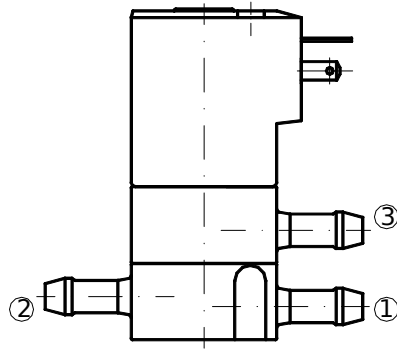
CODE ①	Hosetail connection	Orifice mm	KV m ³ /h	Differential pressure bar		Nominal power			Voltage		Connector
				Min	Max	Alternating current VA		Direct current Watt	AC	DC	
						Inrush	Holding				
				NC Normally closed		D Diverting					
E330PB32/.../106620	ø5.5	3.2	0.2	0	0.4	6.5	4.5	---	230	---	PG7 10348040
D330PB32/.../111140	ø5.5	3.2	0.2	0	0.4	---	---	4	---	12	
D330PB32/.../111150	ø5.5	3.2	0.2	0	0.4	---	---	4	---	24	

① Configuration

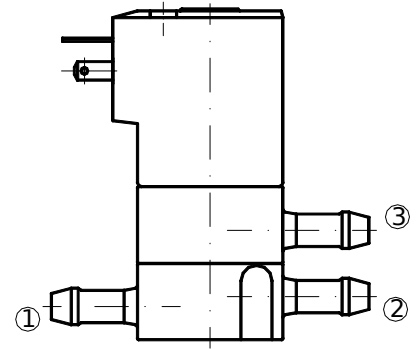
P.S. Solenoid valves and coils are not supplied separately



code /
3/2 NC



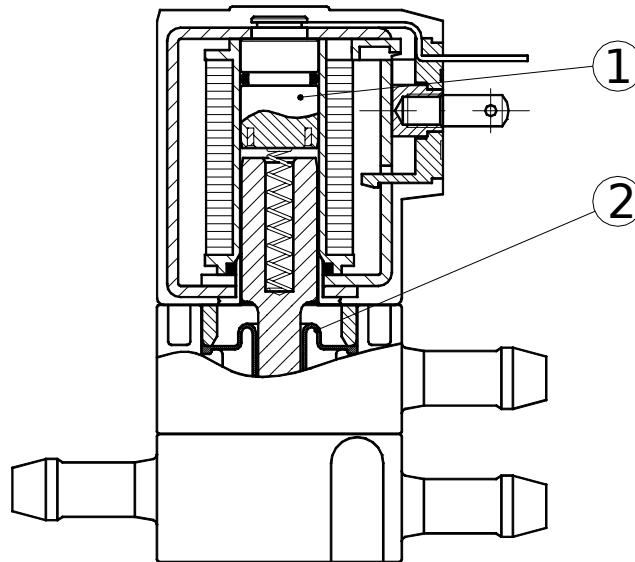
code D
DIVERTING



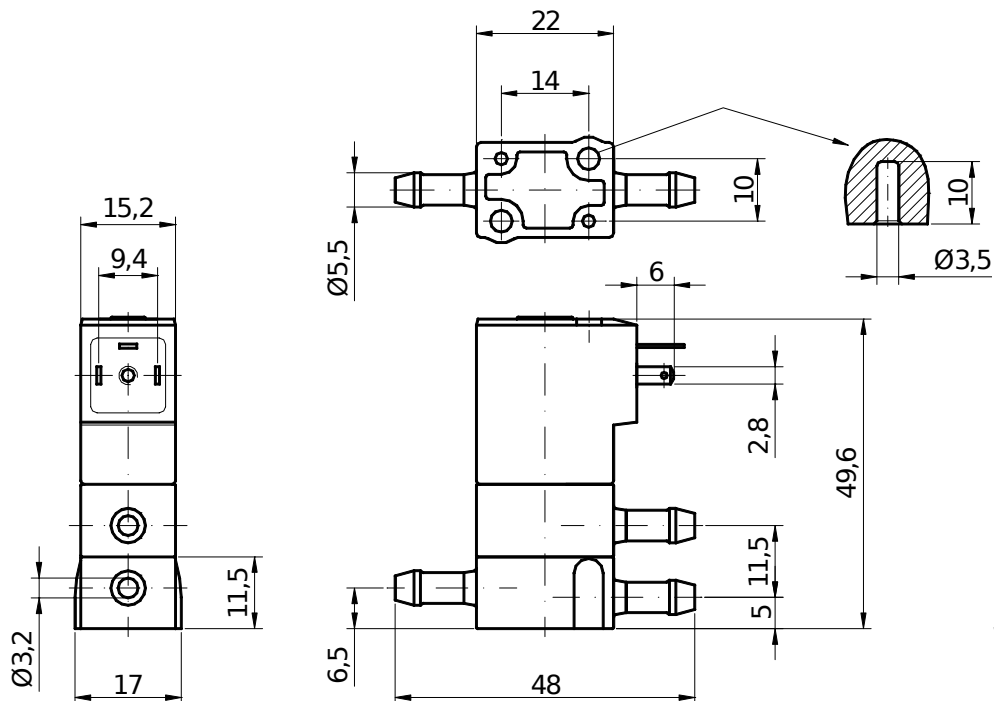
code R

SPARE PARTS LIST

- 1. Coil
- 2. Diaphragm



OVERALL DIMENSION



Weight = 0.04 Kg