

**DESCRIPTION**

Solenoid valve 2 way normally closed  
 direct acting with dry armature and  
 hosetails for flexible pipes.  
 No metal parts in contact with the media.

**CONSTRUCTION**

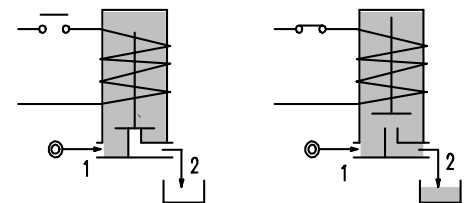
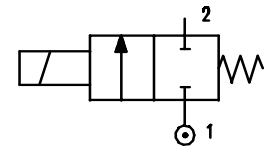
Body	Acetal copolymer
Armature tube	Stainless steel
Plunger and core	Stainless steel
Springs	Stainless steel
Seal material	Silicone



**2**

**FEATURES**

Maximum allowable pressure 2 bar  
 Maximum fluid viscosity 25cSt (mm<sup>2</sup>/s)  
 Ambient temperature : with class F coil -10° +55°C  
 with class H coil -10° +80°C  
 Mounting position with vertical coil above



CODE ②	Connection mm	KV m <sup>3</sup> /h	Differential pressure bar			Nominal power			Coil		Seal	Temp. range °C
			Min	Max		AC Inrush	VA Holding	DC Watt	Series	Width		
				AC	DC							
E161PS8///.....	8	1.1	0	0.15	0.15	20	15	10	2	30	SILICONE=S	< +95
E161PS8/1/.....	8	1.1	0	0.5	0.5	40	30	27	5	36		

**For use with VACUUM - feeds from 2 to 1**

CODE ②	Connection mm	KV m <sup>3</sup> /h	Differential pressure bar			Nominal power			Coil		Seal	Temp. range °C
			Min	Max		AC Inrush	VA Holding	DC Watt	Series	Width		
				AC	DC							
E161PS8/V/.....	8	1.1	0	-0.9	-0.7	20	15	10	2	30	SILICONE=S	< +95
E161PS8/V/.....	8	1.1	0	-0.9	-0.9	40	30	27	5	36		

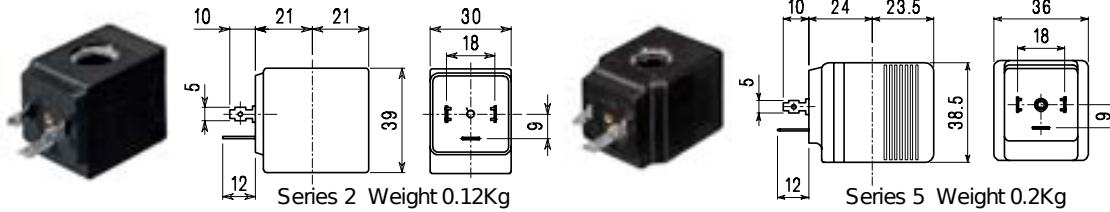
② Coil

Example: E161PS8///20E  
 Coil 220V 50/60Hz

COILS	Alternating Current ~50/60Hz Volt							Direct Current Volt			Electrical connection	Connectors
	12	24	48	110	220 230	240	380	12	24	48		
Series <b>2</b> Width 30 Code ②	20A	20B	20C	20D	20E	20F	20G	200	201	202	DIN 43650A	PG9 code 10349000
Series <b>5</b> Width 36 Code ②	52A	52B	52C	52D	52E	52F	52G	521	521	522	DIN 43650A	PG11 code 10349001

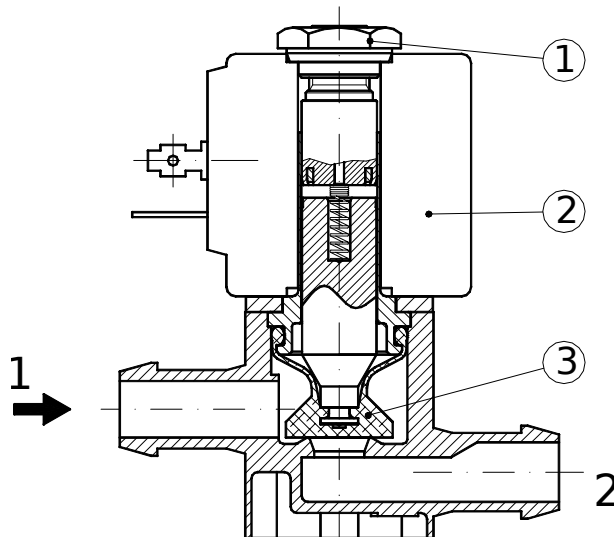
**DESCRIPTION**  
 Insulation class  
 Series 2=F Series 5=H  
 Voltage tolerance  
 AC +15% -10%  
 DC ±10%  
 Protection class  
 IP65 with connector fitted  
 IP00 without connector  
 Continuous service ED100%

**OPTIONS**  
 Class H insulation (series 2)  
 Cable attached  
 Special coil voltages  
 Special coil powers

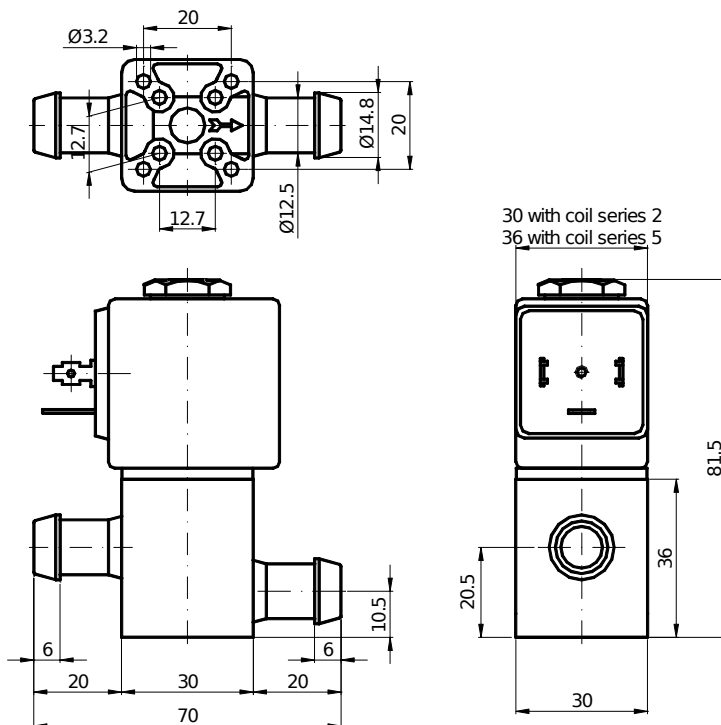


**SPARE PARTS LIST**

1. Coil fixing nut
2. Coil
3. Diaphragm



**OVERALL DIMENSION**



Weight with coil series 2 = 0.23 Kg  
 Weight with coil series 5 = 0.31 Kg