

DESCRIPTIONS

Solenoid valve 2 way normally closed
 direct acting with dry armature.
 No metal parts in contact with the media.

CONSTRUCTION

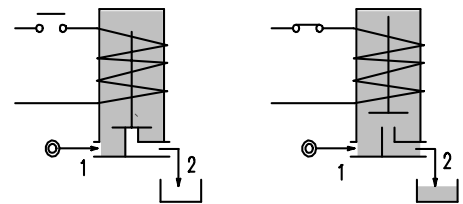
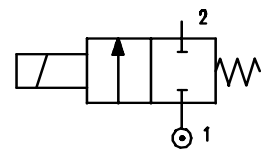
Body	Acetal copolymer
Armature tube	Stainless steel
Plunger and core	Stainless steel
Springs	Stainless steel
Seal material	Silicone



2

FEATURES

Maximum allowable pressure 1.5 bar
 Maximum fluid viscosity 25cSt (mm²/s)
 Ambient temperature : with class F coil -10°C +55°C
 with class H coil -10°C +80°C
 Mounting position with vertical coil above



CODE ②	Connection G ISO 228	Orifice mm	KV m ³ /h	Differential pressure bar		Nominal power			Coil		Seal	Temp. range °C
				Inlet	Outlet	AC Inrush	VA Holding	DC Watt	Series	Width		
Version with closed vent												
E160SS10/2/.....	1/2"	10	1.7	0.5	0.1	20	15	10	2	30	SILICONE=S	< +95
Version with open vent												
E160SS10/3/.....	1/2"	10	1.7	0.5	0.1	20	15	10	2	30		

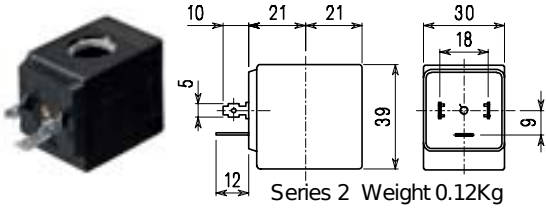
② Coil

Example: E160SS10/2/20E Closed vent - Coil 220V 50/60Hz

COILS	Alternating Current ~50/60Hz Volt							Direct Current Volt			Electrical connection	Connectors
	12	24	48	110	220 230	240	380	12	24	48		
Series 2 Width 30 Code ②	20A	20B	20C	20D	20E	20F	20G	200	201	202	DIN 43650A	PG9 code 10349000

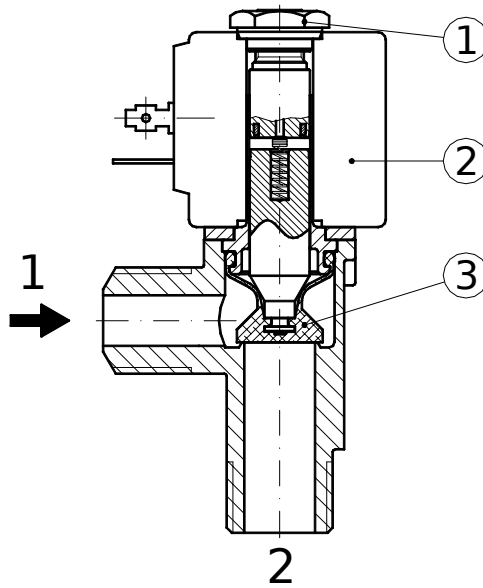
DESCRIPTION
 Class F insulation
 Voltage tolerance
 AC +15% -10%
 DC ±10%
 Protection class
 IP65 with connector fitted
 IP00 without connector
 Continuous service ED100%

OPTIONS
 Class H insulation
 Cable attached
 Special coil voltages
 Special coil powers



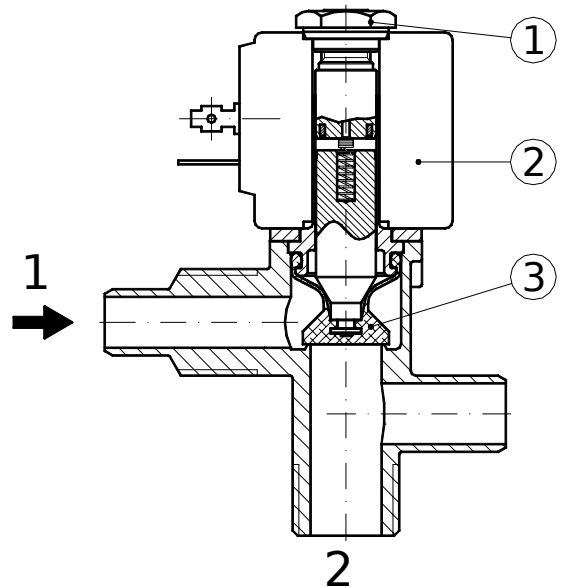
SPARE PARTS LIST

1. Coil fixing nut
2. Coil
3. Diaphragm



E160SS10/2/...

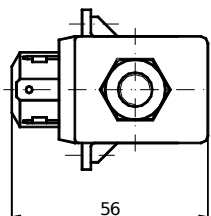
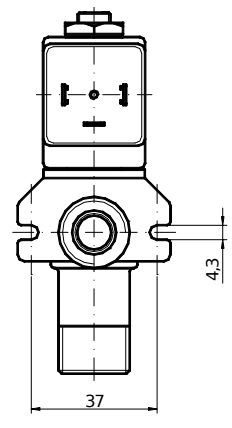
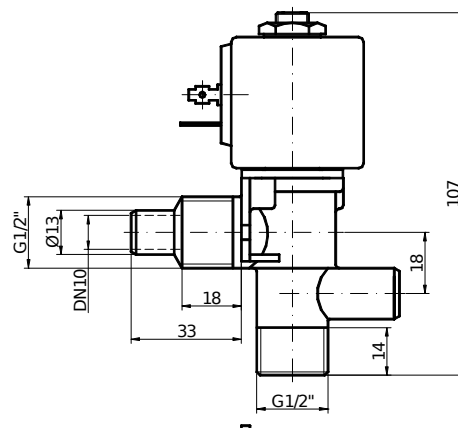
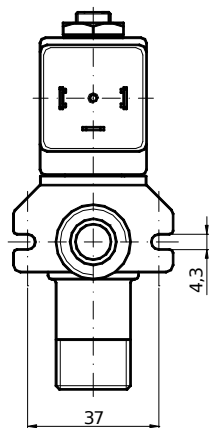
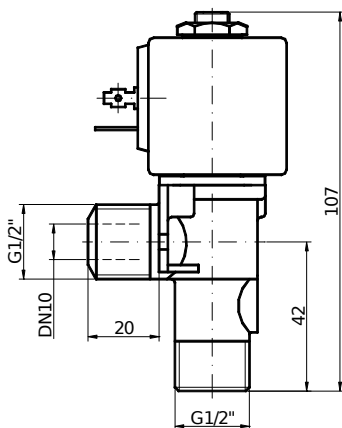
Version with closed vent



E160SS10/3/...

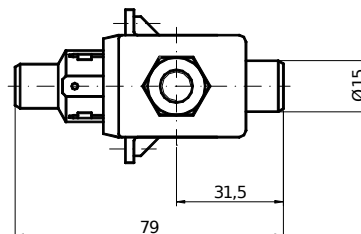
Version with open vent

OVERALL DIMENSION



E160SS10/2/...

Weight 0.22 Kg



E160SS10/3/...

Weight 0.24 Kg