

DESCRIPTION

Solenoid valve 2 way normally closed
 direct acting with dry armature.
 No metal parts in contact with the media.

CONSTRUCTION

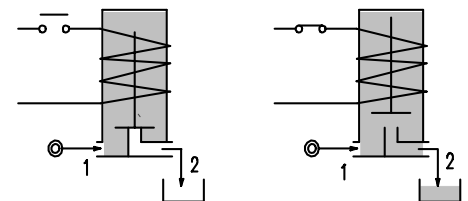
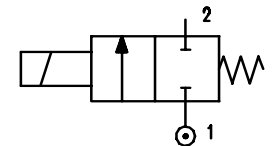
Body	Acetal copolymer
Armature tube	Brass
Plunger and core	Stainless steel
Springs	Stainless steel
Seal material	Silicone



2

FEATURES

Maximum allowable pressure 2 bar
 Maximum fluid viscosity 25cSt (mm²/s)
 Ambient temperature : with class F coil -10°C +55°C
 with class H coil -10°C +80°C
 Preferred mounting position with vertical coil above.



Versions with closed vent

CODE ②	Connection G ISO 228	Orifice mm	KV m ³ /h	Differential pressure bar			Nominal power			Coil		Seal	Temp. range °C
				Min	Max		AC Inrush	VA Holding	DC Watt	Series	Width		
					AC	DC							
E150PS75///.....	-	7.5	0.7	0	0.2	0.2	12	8	6.5	3	22	SILICONE=S	< +95
E150PS75/6/.....	1/4"	7.5	0.7	0	0.2	0.2	12	8	6.5	3	22		
D150PS75///.....	-	7.5	0.7	0	-	0.2	12	8	6.5	3	22		
D150PS75/5/.....	1/4"	7.5	0.7	0	-	0.2	12	8	6.5	3	22		

Versions with open vent

CODE ②	Connection G ISO 228	Orifice mm	KV m ³ /h	Differential pressure bar			Nominal power			Coil		Seal	Temp. range °C
				Min	Max		AC Inrush	VA Holding	DC Watt	Series	Width		
					AC	DC							
E150PS75/7/.....	-	7.5	0.7	0	0.2	0.2	12	8	6.5	3	22	SILICONE=S	< +95
E150PS75/1/.....	1/4"	7.5	0.7	0	0.2	0.2	12	8	6.5	3	22		
D150PS75/4/.....	-	7.5	0.7	0	-	0.2	12	8	6.5	3	22		
D150PS75/3/.....	1/4"	7.5	0.7	0	-	0.2	12	8	6.5	3	22		

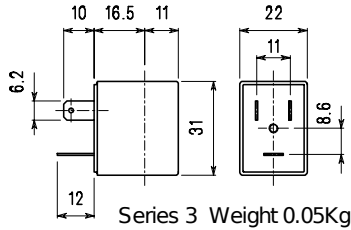
② Coil

Example: E150PS75///30E Fixing by flange - Closed vent
 Coil 220V 50/60Hz

COILS	Alternating Current ~50/60Hz Volt							Direct Current Volt			Electrical Connection	Connectors
	12	24	48	110	220 230	240	380	12	24	48		
Series 3 Width 22 Code ②	30A	30B	30C	30D	30E	30F	30G	300	301	302	DIN 46244	PG9 code 10348000

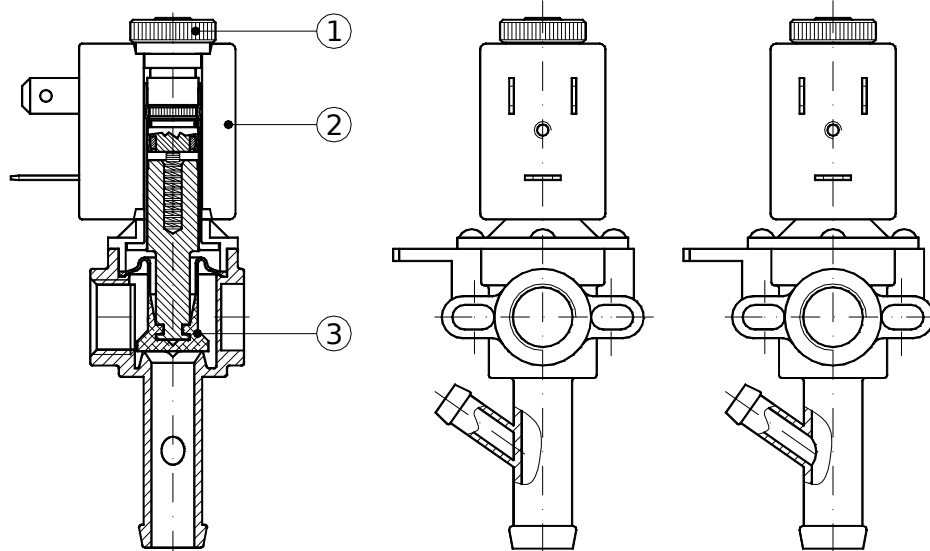
DESCRIPTION
 Class F insulation
 Voltage tolerance
 AC +15% -10%
 DC ±10%
 Protection class
 IP65 with connector fitted
 IP00 without connector
 Continuous service ED100%

OPTIONS
 Class H insulation
 Cable attached
 Special coil voltages
 Special coil powers



SPARE PARTS LIST

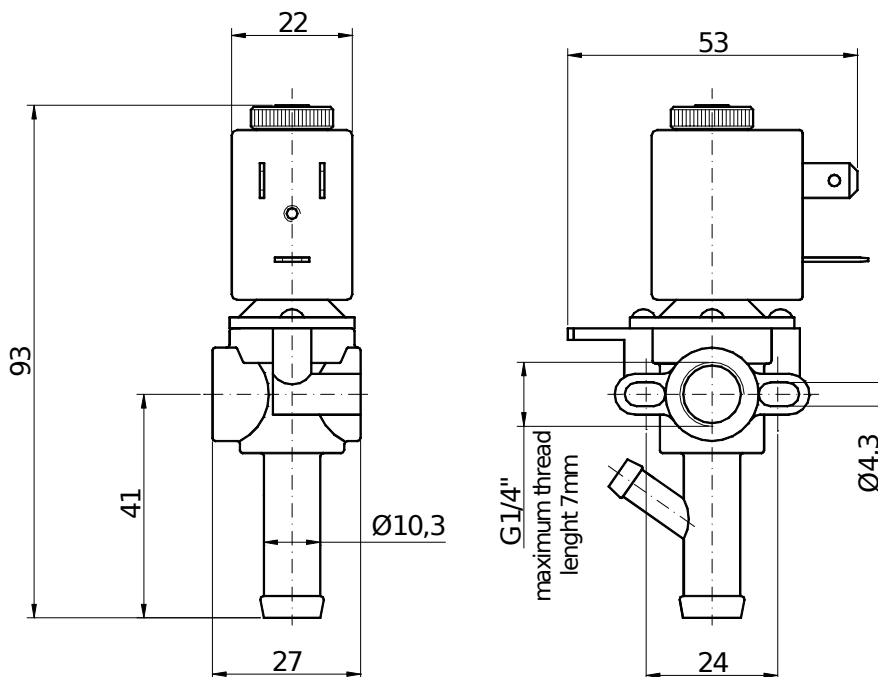
1. Coil fixing nut
2. Coil
3. Diaphragm



Version with closed vent

Version with open vent

OVERALL DIMENSION



Weight = 0.1 Kg