

**DESCRIPTION**

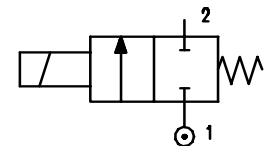
Solenoid valve 2 way direct acting poppet type . Bi-stable impulse drive. The bi-stable function is achieved by the use of a polarised permanent magnet energising the coil with a DC current for at least 15ms in the reverse direction of the preceding impulse.



**2**

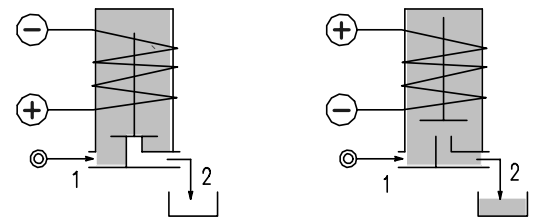
**CONSTRUCTION**

Body	Brass
Armature tube	Brass
Plunger and core	Stainless steel
Magnet	NeFeB
Springs	Stainless steel
Seal material	NBR FPM EPDM



**FEATURES**

Maximum allowable pressure 50 bar  
 Maximum fluid viscosity 25cSt (mm<sup>2</sup>/s)  
 Ambient temperature : with class F coil -10°C +55°C  
 with class H coil -10°C +80°C  
 Universal mounting position



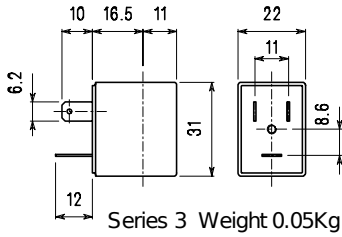
**OPTIONS :** Armature tube in stainless steel  
 Electroless nickel plating  
 Explosion proof coil according to ATEX - EExmII Series7  
 Special powers

CODE ① ②	Connection G ISO 228	Orifice mm	KV m <sup>3</sup> /h	Differential pressure bar		Nominal power DC Watt	Coil		Seal ①	Temp. range °C
				Min	Max		Series	Width		
D115A.....12//.....	1/8"	1.2	0.04	0	12	2	3	22	NBR=B	-10 +90
D115A.....15//.....	1/8"	1.5	0.06	0	8	2	3	22		
D115A.....20//.....	1/8"	2	0.09	0	3	2	3	22	EPDM=E	<-140
	1/8"	2	0.09	0	12	5	3	22		
D115A.....25//.....	1/8"	2.5	0.14	0	1	2	3	22		
	1/8"	2.5	0.14	0	5	5	3	22		
D115A.....31//.....	1/8"	3.1	0.19	0	2	5	3	22	FPM=V	-10 +130
	1/8"	3.1	0.19	0	3.5	6.5	3	22		

- ① Seal
- ② Coil

Example: D115AE20///300120 EPDM seal  
 Coil 12V DC 2W

COIL	DIRECT CURRENT															Electrical connection	Connectors
	3V			6V			9V			12V			24V				
	2W	5W	6.5W	2W	5W	6.5W	2W	5W	6.5W	2W	5W	6.5W	2W	5W	6.5W		
Series 3 Width 22 Code ②	308120			305120	305150		307120	307150		300120	300150	300	301120	301150	301	DIN 46244	PG9 code 10348000

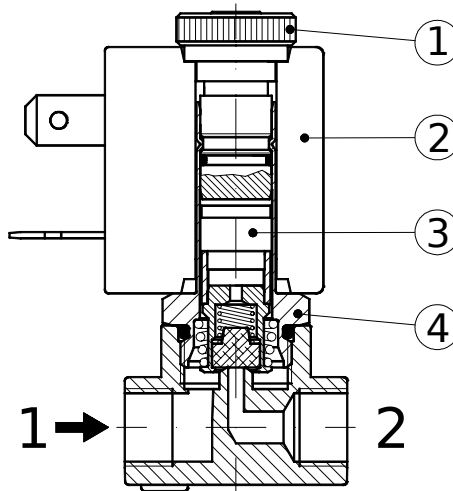


**DESCRIPTION**  
 Class F insulation  
 Voltage tolerance  $\pm 10\%$   
 Protection class  
 IP65 with connector fitted  
 IP00 without connector

**OPTIONS**  
 Class H insulation  
 Cable attached  
 Special coil powers  
 Special coil voltages

**SPARE PARTS LIST**

1. Coil fixing nut
2. Coil
3. Plunger
4. Armature tube with core



**OVERALL DIMENSION**

