

**DESCRIPTION**

Solenoid valve 2 way normally closed  
direct acting poppet type

**CONSTRUCTION**

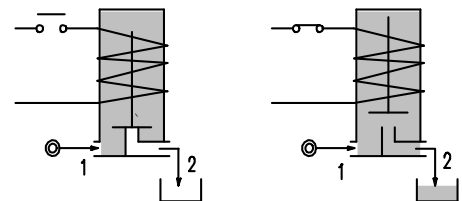
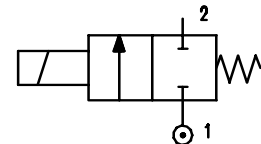
|                  |                 |
|------------------|-----------------|
| Body             | Stainless steel |
| Armature tube    | Stainless steel |
| Plunger and core | Stainless steel |
| Springs          | Stainless steel |
| Seal material    | NBR             |
|                  | FPM             |
|                  | EPDM            |



**2**

**FEATURES**

Maximum allowable pressure 50 bar \*  
Maximum fluid viscosity 25cSt (mm<sup>2</sup>/s)  
Ambient temperature : with class F coil -10°C +55°C  
with class H coil -10°C +80°C  
Universal mounting position



**OPTIONS :** Silver shading ring  
Explosion proof coil according to ATEX - EExmII Series7  
For use with oxygen

| CODE<br>① ②          | Connection<br>G<br>ISO 228 | Orifice<br>mm | KV<br>m <sup>3</sup> /h | Differential pressure<br>bar |     |     | Nominal power |               |            | Coil   |       | Seal<br>① | Temp.<br>range<br>°C |
|----------------------|----------------------------|---------------|-------------------------|------------------------------|-----|-----|---------------|---------------|------------|--------|-------|-----------|----------------------|
|                      |                            |               |                         | Min                          | Max |     | AC<br>Inrush  | VA<br>Holding | DC<br>Watt | Series | Width |           |                      |
|                      |                            |               |                         |                              | AC  | DC  |               |               |            |        |       |           |                      |
| E111A.....12///..... | 1/8"                       | 1.2           | 0.04                    | 0                            | 25  | 25  | 12            | 8             | 6.5        | 3      | 22    | NBR=B     | -10 +90              |
| E111A.....15///..... | 1/8"                       | 1.5           | 0.06                    | 0                            | 16  | 16  | 12            | 8             | 6.5        | 3      | 22    |           |                      |
| E111A.....20///..... | 1/8"                       | 2             | 0.09                    | 0                            | 12  | 10  | 12            | 8             | 6.5        | 3      | 22    |           |                      |
| E111A.....25///..... | 1/8"                       | 2.5           | 0.14                    | 0                            | 8   | 5.5 | 12            | 8             | 6.5        | 3      | 22    | EPDM=E    | <+140                |
| E111A.....31///..... | 1/8"                       | 3.1           | 0.19                    | 0                            | 5   | 2   | 12            | 8             | 6.5        | 3      | 22    |           |                      |
| E111A.....20///..... | 1/8"                       | 2             | 0.09                    | 0                            | 25  | 15  | 15            | 11            | 5          | 4      | 30    |           |                      |
| E111A.....25///..... | 1/8"                       | 2.5           | 0.14                    | 0                            | 16  | 8   | 15            | 11            | 5          | 4      | 30    | FPM=V     | -10 +130             |
| E111A.....31///..... | 1/8"                       | 3.1           | 0.19                    | 0                            | 8   | 4   | 15            | 11            | 5          | 4      | 30    |           |                      |

- ① Seal
- ② Coil

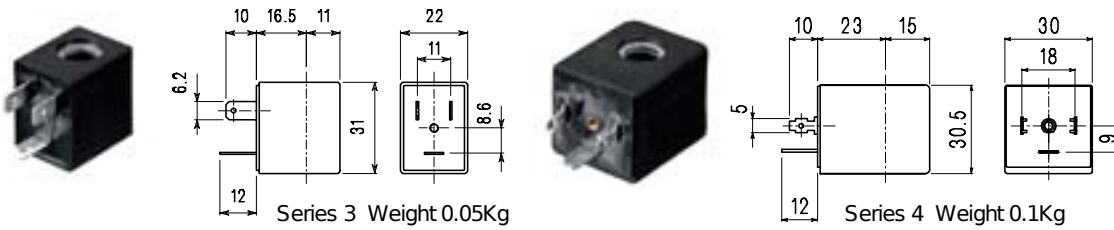
Example: E111AB20///30B NBR seal  
Coil 24V 50/60Hz

\* REMARK: The maximum allowable pressure PS for steam is 2,5bar (gauge pressure)

| COILS                                 | Alternating Current<br>~50/60Hz Volt |     |     |     |            |     |     | Direct Current<br>Volt |     |     | Electrical<br>connection | Connectors              |
|---------------------------------------|--------------------------------------|-----|-----|-----|------------|-----|-----|------------------------|-----|-----|--------------------------|-------------------------|
|                                       | 12                                   | 24  | 48  | 110 | 220<br>230 | 240 | 380 | 12                     | 24  | 48  |                          |                         |
| Series <b>3</b><br>Width 22<br>Code ② | 30A                                  | 30B | 30C | 30D | 30E        | 30F | 30G | 300                    | 301 | 302 | DIN 46244                | PG9<br>code<br>10348000 |
| Series <b>4</b><br>Width 30<br>Code ② | 40A                                  | 40B | 40C | 40D | 40E        | 40F | 40G | 400                    | 401 | 402 | DIN 43650A               | PG9<br>code<br>10349000 |

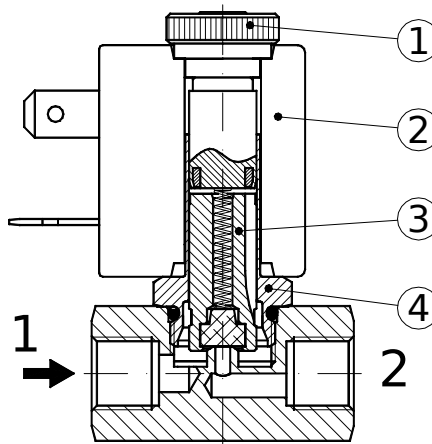
**DESCRIPTION**  
 Class F insulation  
 Voltage tolerance  
 AC +15% -10%  
 DC ±10%  
 Protection class  
 IP65 with connector fitted  
 IP00 without connector  
 Continuous service ED100%

**OPTIONS**  
 Class H insulation  
 Cable attached  
 Special coil voltages  
 Special coil powers

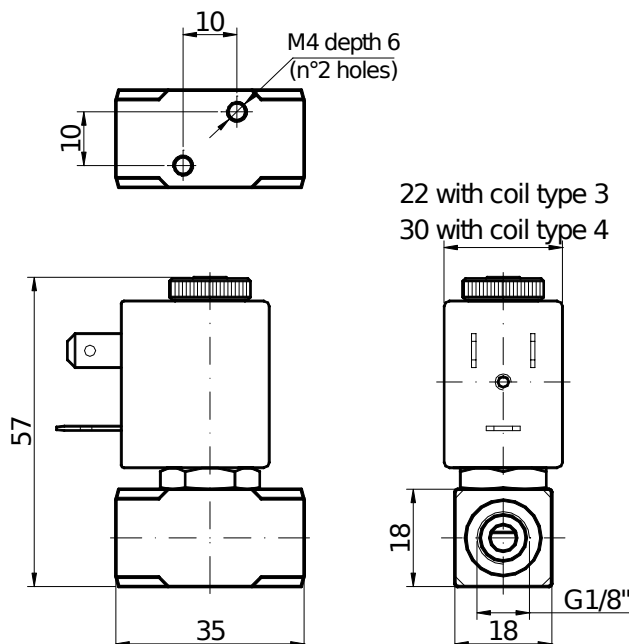


**SPARE PARTS LIST**

1. Coil fixing nut
2. Coil
3. Plunger
4. Armature tube with core



**OVERALL DIMENSION**



Weight with coil series 3 = 0.15 Kg  
 Weight with coil series 4 = 0.20 Kg