

**DESCRIPTION**

Solenoid valve 2 way normally closed with servo-assisted diaphragm and explosion proof coil certified:  
 CESI 03 ATEX 344 ExII2G/D EEx "d" IIC T6



**VALVE CONSTRUCTION**

Body and cover Brass  
 Seal material FPM  
 NBR

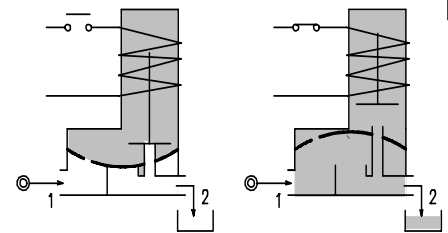
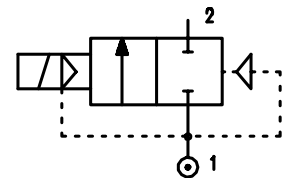
**EXPLOSION PROOF CONSTRUCTION**

Housing Red colour alloy  
 Electrical connection 1/2" NPT

**FEATURES**

Minimum differential pressure 0.15 bar  
 Maximum allowable pressure 25 bar  
 Maximum fluid viscosity 25cSt (mm<sup>2</sup>/s)  
 Ambient temperature : -10°C +40°C  
 Preferred mounting position with vertical coil above

**OPTIONS :** Electroless nickel plating  
 Version with slow closing diaphragm



**4**

**NOTE:** The solenoid valve is suitable for contact with **NOT** potential explosive medias only

CODE ①	Connection G ISO 228	Orifice mm	KV m <sup>3</sup> /h	Differential pressure bar			Nominal power		Coil ① Series	Seal	Temp. range °C
				Min	Max		AC Holding	DC			
					AC	DC					
A107BV10/1/.....	1/4"	10	1.5	0.15	15	15	12VA	8W	A6	FPM=V	-10 +130
A107CV10/1/.....	3/8"	10	1.7	0.15	15	15					
A107CV12/1/.....	3/8"	12	2.2	0.15	15	15					
A107DV12/1/.....	1/2"	12	2.5	0.15	15	15					
A107EV18/1/.....	3/4"	18	5.5	0.15	13	13					
A107FV25/1/.....	1"	24	10.2	0.15	10	10					
A107GV30/1/.....	1 1/4"	30	15	0.15	10	10					
A107GV37/1/.....	1 1/4"	37	18	0.15	10	10					
A107HV37/1/.....	1 1/2"	37	21	0.15	10	10					
A107IV50/1/.....	2"	50	36	0.15	10	10					
A107MB75/1/.....	2 1/2"	75	75	0.3	10	10					
A107RB75/1/.....	3"	75	84	0.3	10	10	NBR=B	-10 +90			

① Coil

Example: A107DV12/1/A6E FPM seal  
 Coil 230V 50-60Hz

Note: For G2 1/2 e G3 NBR seal only

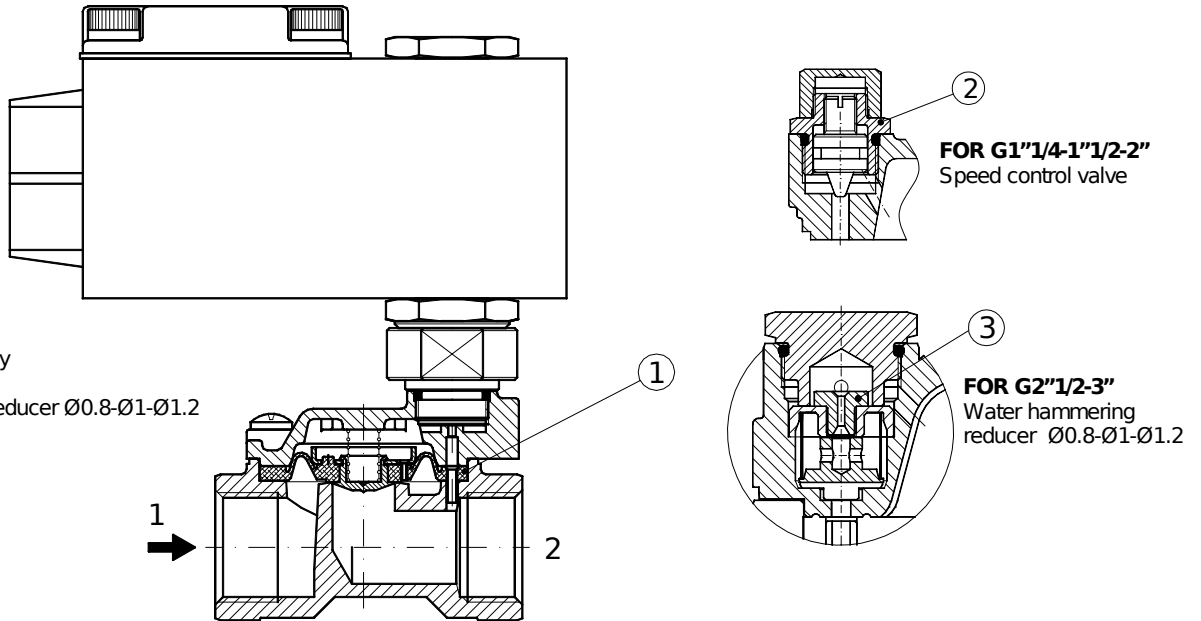


COILS	Alternating Current ~50/60Hz Volt				Direct current Volt			Electrical connection
	24	48	110	220 230	12	24	48	
Series <b>A6</b> Code ①	<b>A6B</b>	<b>A6C</b>	<b>A6D</b>	<b>A6E</b>	<b>A60</b>	<b>A61</b>	<b>A62</b>	<b>1/2" NPT</b>

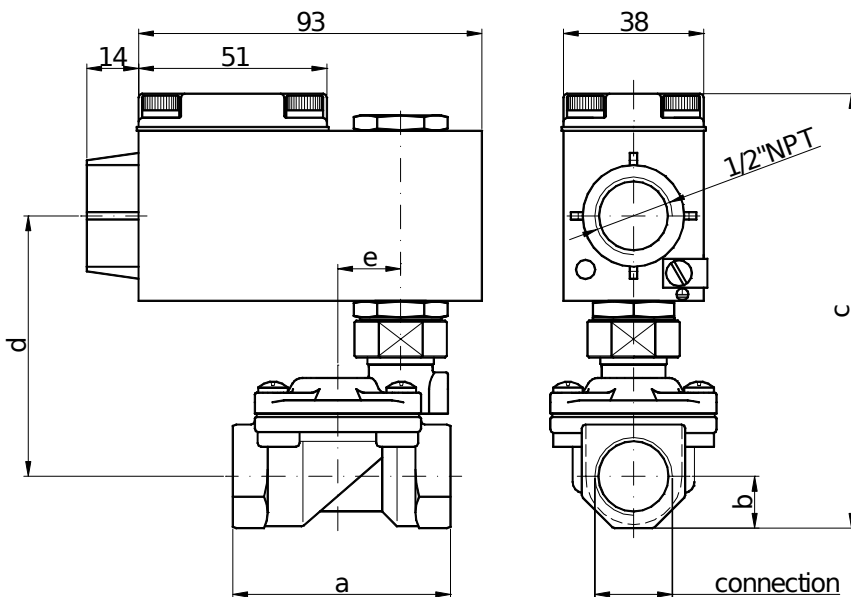
**DESCRIPTION**  
Voltage tolerance  
AC +15% -10%  
DC ±10%  
Protection class IP66

**SPARE PARTS LIST**

1. Diaphragm assembly
2. Speed control valve
3. Water hammering reducer Ø0.8-Ø1-Ø1.2



**OVERALL DIMENSION**



CONNECTION	a	b	c	d	e	Weight Kg	
G1/4"	10	49	11	110	66	16	0.72
G3/8"	10	49	11	110	66	16	0.72
G3/8"	12	59	14	118	70	17	0.92
G1/2"	59	14	118	70	17	0.92	
G3/4"	79	18	127	75.5	22.2	1.12	
G1"	96	20	141	88	30.2	1.50	
G1 1/4 Ø30	119	25	150	91	36	2.27	
G1 1/4	142	28	147	86	43	3.33	
G1 1/2	142	28	147	86	43	3.12	
G2"	158	35	168	95	48	4.72	
G2 1/2	226	51	197	112	69.2	10.40	
G3"	226	51	197	112	69.2	10	