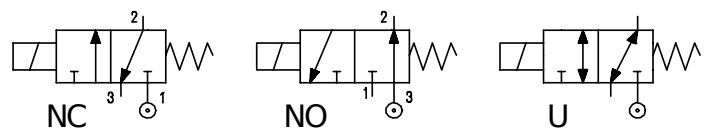


DESCRIPTION

Solenoid valve 3 way
direct acting poppet type

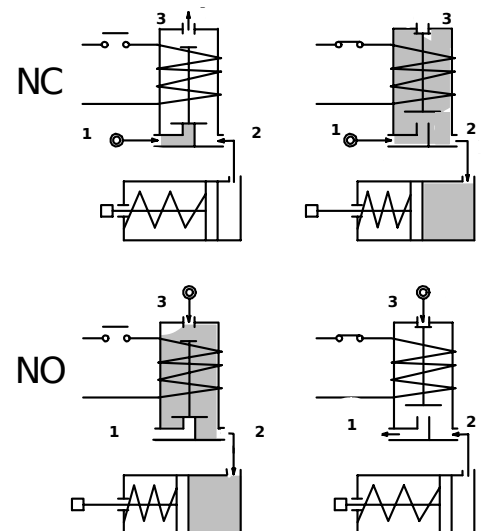
CONSTRUCTION

Body	Brass
Armature tube	Brass
Plunger and core	Stainless steel
Springs	Stainless steel
Seal material	NBR
	FPM
	EPDM



FEATURES

Maximum allowable pressure : maximum differential pressure +10%
 Maximum fluid viscosity 25cSt (mm²/s)
 Ambient temperature : with class F coil -10°C +55°C
 with class H coil -10°C +80°C
 Universal mounting position



OPTIONS : Stainless steel armature tube
 Electroless nickel plating
 Explosion proof coil according to ATEX - EExmII Series 7
 Exhaust port with hosetail connection

CODE ① ②	Flange	Orifice mm		KV m ³ /h	Differential pressure bar			Nominal powers			Coil		Seal ①	Temp. range °C
		Inlet	Exh.		Min	Max		AC Inrush	VA Holding	DC Watt	Series	Width		
						AC	DC							
NC Normally closed														
E312X.....12///.....	Q 25	1.2	1.5	0.04	0	15	15	12	8	6.5	3	22	NBR=B	-10 +90
E312X.....15///.....	Q 25	1.5	1.7	0.06	0	10	10	12	8	6.5	3	22		
NO Normally open														
E312X.....15/S/.....	Q 25	1.5	1.5	0.06	0	10	10	12	8	6.5	3	22	EPDM=E	<-140
U Universal														
E312X.....10/G/.....	Q 25	1	1	0.028	0	10	10	12	8	6.5	3	22	FPM=V	-10 +130

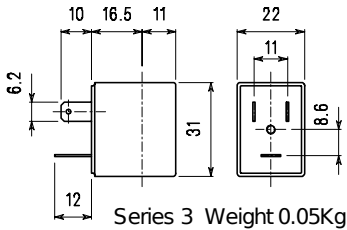
① Seal Example: E312XV15///30B FPM seal Coil 24V 50/60Hz NC
 ② Coil E312XB15/S/301 NBR seal Coil 24V DC NO

P.S. Solenoid valve supplied without fixing screws

COILS	Alternating Current ~50/60Hz Volt							Direct Current Volt			Electrical connection	Connectors
	12	24	48	110	220 230	240	380	12	24	48		
Series 3 Width 22 Code ②	30A	30B	30C	30D	30E	30F	30G	300	301	302	DIN 46244	PG9 code 10348000

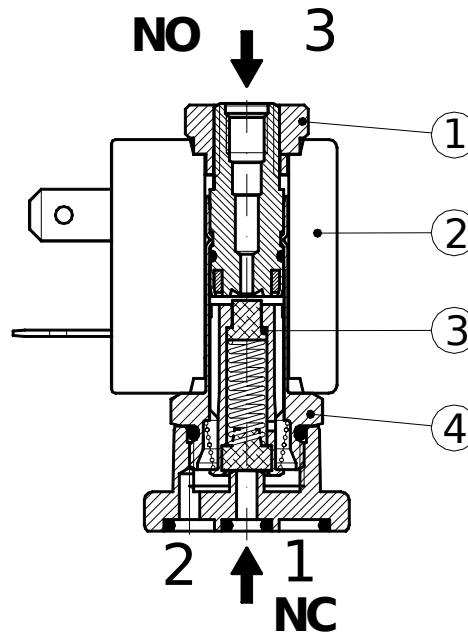
DESCRIPTION
 Class F insulation
 Voltage tolerance
 AC +15% -10%
 DC ±10%
 Protection class
 IP65 with connector fitted
 IP00 without connector
 Continuous service ED100%

OPTIONS
 Class H insulation
 Cable attached
 Special coil voltages
 Special coil powers

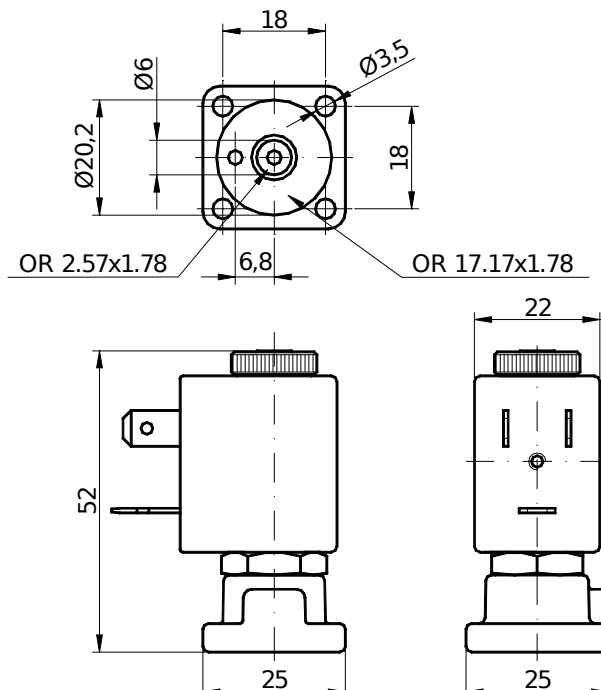


SPARE PARTS LIST

1. Coil fixing nut
2. Coil
3. Plunger
4. Armature tube with core



OVERALL DIMENSION



Weight = 0.12 Kg