

DESCRIPTION

Solenoid valve 2 way normally open direct acting poppet type.

CONSTRUCTION

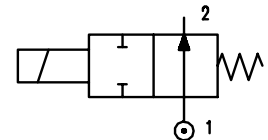
| | |
|------------------|-----------------|
| Body | Brass |
| Armature tube | Brass |
| Plunger and core | Stainless steel |
| Springs | Stainless steel |
| Seal material | NBR |
| | FPM |
| | EPDM |



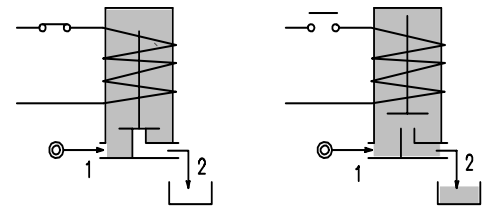
2

FEATURES

Maximum allowable pressure 50 bar *
 Maximum fluid viscosity 25cSt (mm²/s)
 Ambient temperature : with class F coil F -10°C +55°C
 with class H coil -10°C +80°C
 Universal mounting position



OPTIONS : Stainless steel armature tube
 Electroless nickel plating



| CODE ① ② | Flange | Orifice mm | KV m ³ /h | Differential pressure bar | | | Nominal power | | | Coil | | Seal ① | Temp. range °C |
|----------------------|--------|---------------|-------------------------|------------------------------|-----|------------------|---------------|---------------|------------|--------|-------|-----------|----------------------|
| | | | | Min | Max | | AC Inrush | VA Holding | DC Watt | Series | Width | | |
| | | | | | AC | DC | | | | | | | |
| E214X.....15///..... | Q 32 | 1.5 | 0.07 | 0 | 23 | 23 | 20 | 15 | 10 | 2 | 30 | NBR=B | -10 +90 |
| E214X.....20///..... | Q 32 | 2 | 0.1 | 0 | 17 | 17 | 20 | 15 | 10 | 2 | 30 | EPDM=E | <+140 |
| E214X.....25///..... | Q 32 | 2.5 | 0.15 | 0 | 12 | 12 | 20 | 15 | 10 | 2 | 30 | | |
| E214X.....35///..... | Q 32 | 3.5 | 0.32 | 0 | 7 | 4 ^③ | 20 | 15 | 10 | 2 | 30 | FPM=V | -10 +130 |
| E214X.....45///..... | Q 32 | 4.5 | 0.41 | 0 | 4.5 | 3 ^③ | 20 | 15 | 10 | 2 | 30 | | |
| E214X.....52///..... | Q 32 | 5.2 | 0.47 | 0 | 3 | 2.2 ^③ | 20 | 15 | 10 | 2 | 30 | | |

① Seal Example: E214XV52///20B FPM seal
 ② Coil Coil 24V 50/60Hz

③ Only for the DC on the orifices Ø 3,5 - 4,5 - 5,2 the code is D214...../5/.....

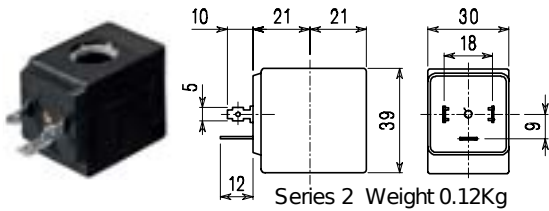
Solenoid valve supplied without fixing screws

* REMARK: The maximum allowable pressure PS for steam is 2,5bar (gauge pressure)

| COILS | Alternating Current ~50/60Hz Volt | | | | | | | Direct current Volt | | | Electrical connection | Connectors |
|--|--------------------------------------|-----|-----|-----|------------|-----|-----|------------------------|-----|-----|--------------------------|-------------------------|
| | 12 | 24 | 48 | 110 | 220 230 | 240 | 380 | 12 | 24 | 48 | | |
| Series 2 Width 30 Code ② | 20A | 20B | 20C | 20D | 20E | 20F | 20G | 200 | 201 | 202 | DIN 43650A | PG9 code 10349000 |

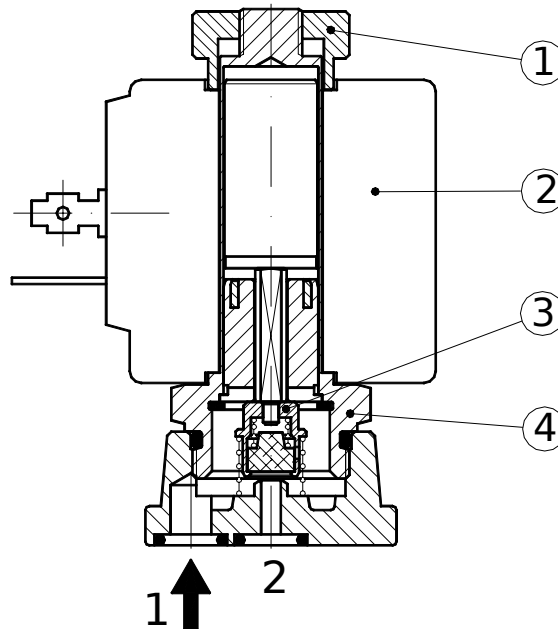
DESCRIPTION
 Class F insulation
 Voltage tolerance
 AC +15% -10%
 DC ±10%
 Protection class
 IP65 with connector fitted
 IP00 without connector
 Continuous service ED100%

OPTIONS
 Class H insulation
 Cable attached
 Special coil voltages
 Special coil powers

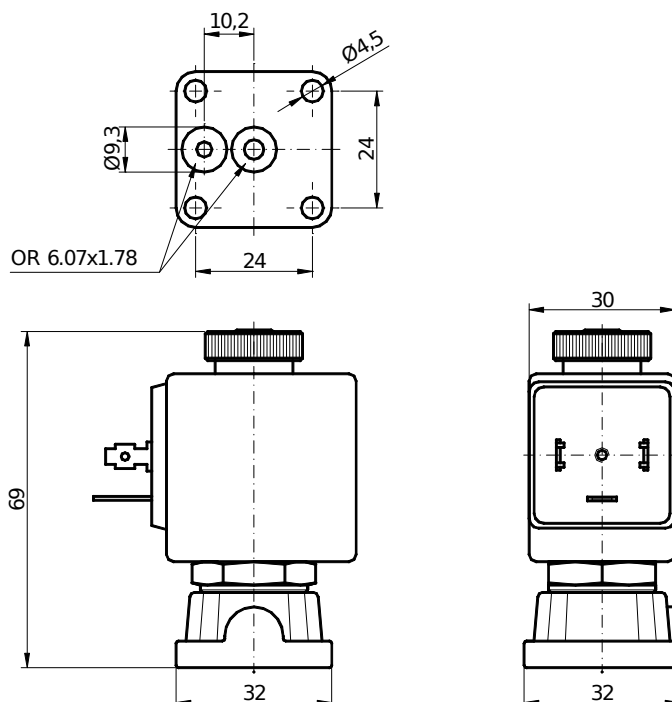


SPARE PARTS LIST

1. Coil fixing nut
2. Coil
3. Seal assembly
4. Armature tube with core



OVERALL DIMENSION



Weight = 0.25 Kg