

DESCRIPTION

Solenoid valve in-line 2 way normally open direct acting poppet type.

CONSTRUCTION

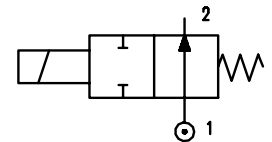
Body	Brass
Armature tube	Brass
Plunger and core	Stainless steel
Springs	Stainless steel
Seal material	NBR
	FPM
	EPDM



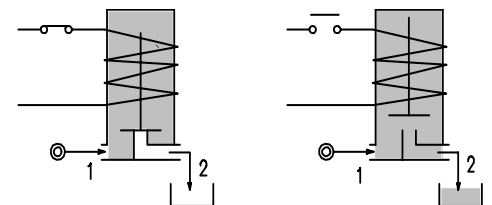
2

FEATURES

Maximum allowable pressure : max working pressure +10%
 Maximum fluid viscosity 25cSt (mm²/s)
 Ambient temperature : with class F coil -10°C +55°C
 with class H coil -10°C +80°C
 Universal mounting position



OPTIONS : Armature tube in stainless steel
 Electroless nickel plating
 Explosion proof coil according to ATEX - EExmII Series 7
 User port with hosetail connection



CODE ① ②	Connection G ISO 228	Orifice mm	KV m ³ /h	Differential pressure bar				Nominal power			Coil		Seal ①	Temp. range °C
				Min	Max		AC Inrush	VA Holding	DC Watt	Series	Width			
					AC	DC								
User port with M5 connection														
E204A.....15///.....	1/8"	1.5	0.06	0	16	16	12	8	6.5	3	22	NBR=B	-10 +90	
E204A.....17///.....	1/8"	1.7	0.08	0	12	12	12	8	6.5	3	22			
User port with hosetail connection														
E204A.....15/1/.....	1/8"	1.5	0.06	0	16	16	12	8	6.5	3	22	EPDM=E	<+140	
E204A.....17/1/.....	1/8"	1.7	0.08	0	12	12	12	8	6.5	3	22			
User port with hosetail connection and relief valve														
E204A.....15/3/.....	1/8"	1.5	0.06	0	16	16	12	8	6.5	3	22	FPM=V	-10 +130	
E204A.....17/3/.....	1/8"	1.7	0.08	0	12	12	12	8	6.5	3	22			

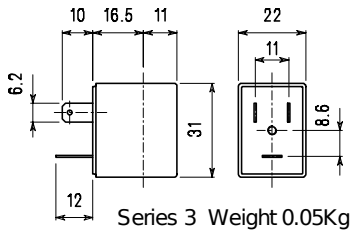
- ① Seal
- ② Coil

Example: E204AB17///301 NBR seal
 Coil 24V DC

COILS	Alternating Current ~50/60Hz Volt							Direct Current Volt			Electrical connection	Connectors
	12	24	48	110	220 230	240	380	12	24	48		
Series 3 Width 22 Code ②	30A	30B	30C	30D	30E	30F	30G	300	301	302	DIN 46244	PG9 code 10348000

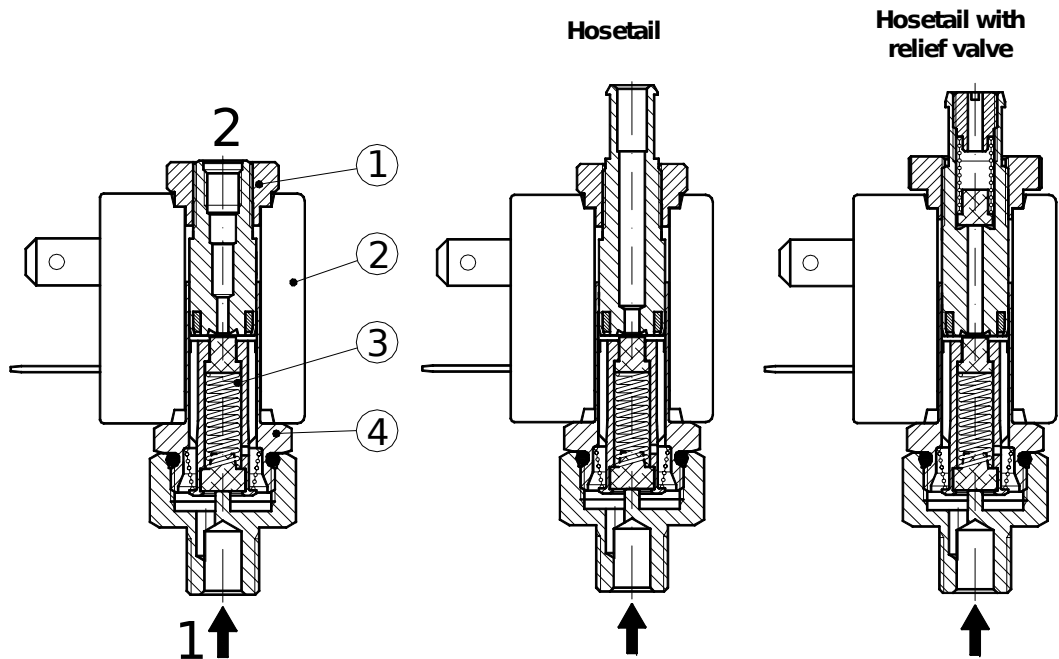
DESCRIPTION
 Class F insulation
 Voltage tolerance
 AC +15% -10%
 DC ±10%
 Protection class
 IP65 with connector fitted
 IP00 without connector
 Continuous service ED100%

OPTIONS
 Class H insulation
 Cable attached
 Special coil voltages
 Special coil powers

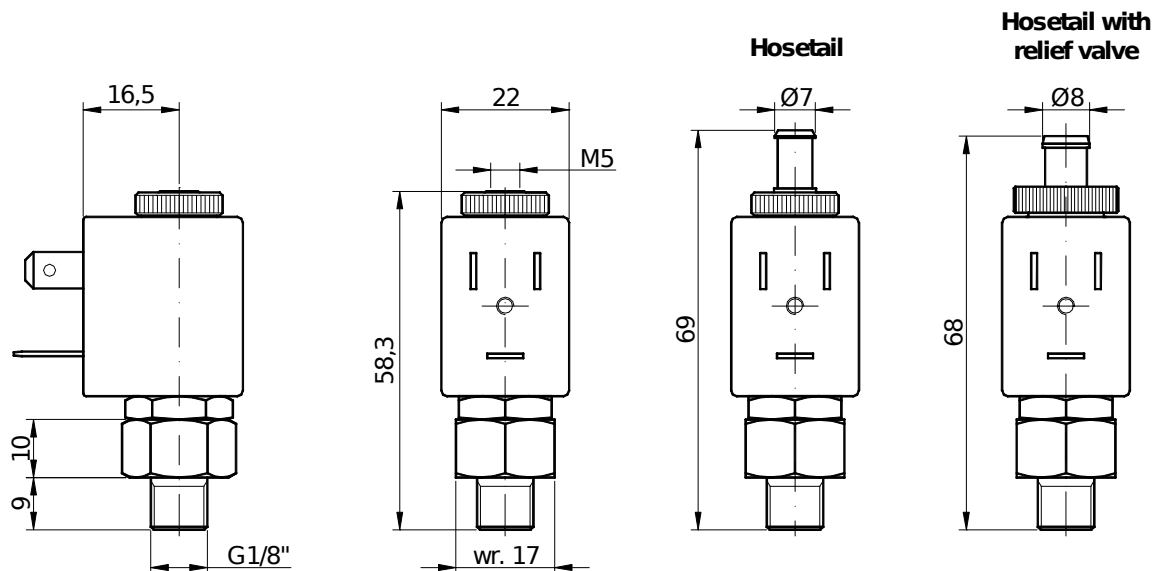


SPARE PARTS LIST

1. Coil fixing nut
2. Coil
3. Plunger
4. Armature tube with core



OVERALL DIMENSION



Weight = 0.10 Kg