

DESCRIPTION

Solenoid valve 2 way normally closed
direct acting poppet type

CONSTRUCTION

Body	Brass
Armature tube	Stainless steel
Plunger and core	Stainless steel
Springs	Stainless steel
Seal material	NBR
	FPM
	EPDM
	PTFE

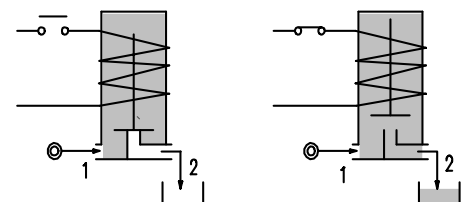
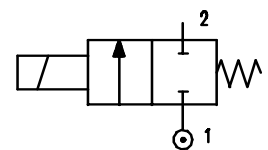


2

FEATURES

Maximum allowable pressure 50 bar *
 Maximum fluid viscosity 25cSt (mm²/s)
 Ambient temperature : with class F coil -10°C +55°C
 with class H coil -10°C +80°C
 Universal mounting position

OPTIONS : Manual override
 Electroless nickel plating
 Stainless steel seat



CODE ① ②	Flange	Orifice mm	KV m ³ /h	Differential pressure bar		Nominal power			Coil		Seal ①	Temp. range °C	
				Min	Max	AC Inrush	VA Holding	DC Watt	Series	Width			
													AC
E114X.....15///.....	Q 32	1.5	0.07	0	30	26	20	15	10	2	30	NBR=B EPDM=E FPM=V PTFE=W ③	-10 +90 <+140 -10 +130 -10 +160
E114X.....20///.....	Q 32	2	0.1	0	22	20	20	15	10	2	30		
E114X.....25///.....	Q 32	2.5	0.15	0	16	14	20	15	10	2	30		
E114X.....35///.....	Q 32	3.5	0.32	0	10	8	20	15	10	2	30		
E114X.....45///.....	Q 32	4.5	0.41	0	6.5	3.5	20	15	10	2	30		
E114X.....52///.....	Q 32	5.2	0.47	0	4	1.8	20	15	10	2	30		
E114X.....25///.....	Q 32	2.5	0.15	0	35	33	40	30	27	5	36		
E114X.....35///.....	Q 32	3.5	0.32	0	20	19	40	30	27	5	36		
E114X.....45///.....	Q 32	4.5	0.41	0	14	13	40	30	27	5	36		
E114X.....52///.....	Q 32	5.2	0.47	0	10	9	40	30	27	5	36		

- ① Seal
 - ② Coil
 - ③ Maximum allowable leakage <0.2nL/h
- Example: E114XB25///20E NBR seal
 Coil 220V 50/60Hz

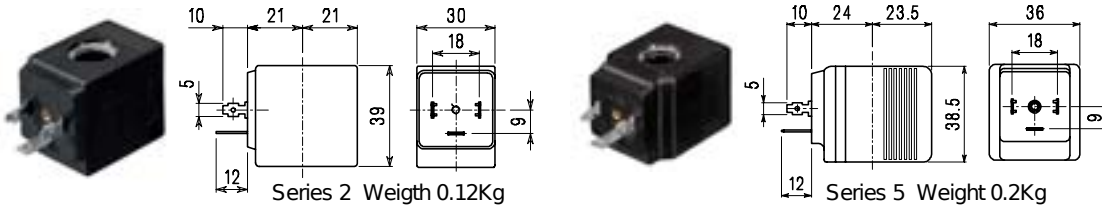
Solenoid valve supplied without fixing screws

* REMARK: The maximum allowable pressure PS for steam is 2,5bar (gauge pressure)

COILS	Alternating Current ~50/60Hz Volt							Direct Current Volt			Electrical connection	Connectors
	12	24	48	110	220 230	240	380	12	24	48		
Series 2 Width 30 Code ②	20A	20B	20C	20D	20E	20F	20G	200	201	202	DIN 43650A	PG9 code 10349000
Series 5 Width 36 Code ②	52A	52B	52C	52D	52E	52F	52G	521	521	522	DIN 43650A	PG11 code 10349001

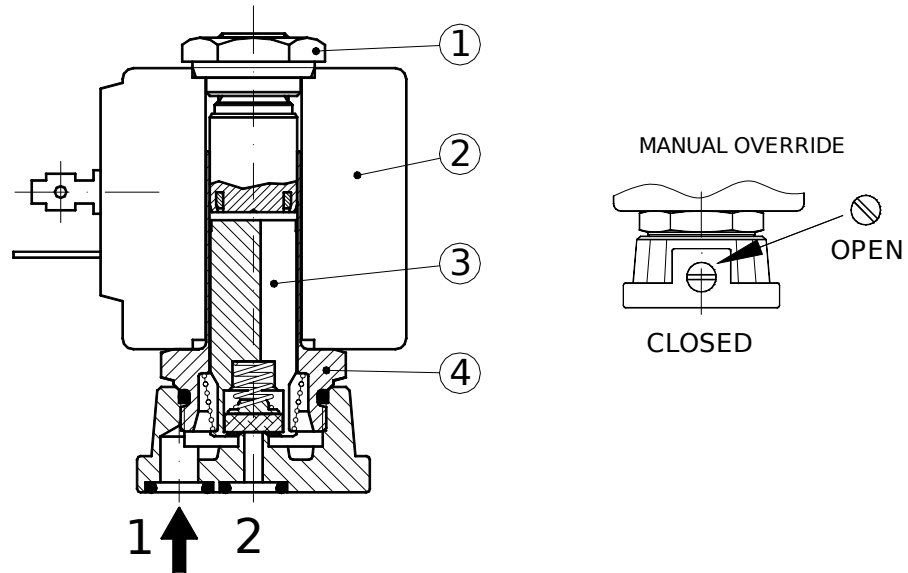
DESCRIPTION
 Insulation class
 Series 2=F Series 5=H
 Voltage tolerance
 AC +15% -10%
 DC ±10%
 Protection class
 IP65 with connector fitted
 IP00 without connector
 Continuous service ED100%

OPTIONS
 Class H insulation (series 2)
 Cable attached
 Special coil voltages
 Special coil powers



SPARE PARTS LIST

1. Coil fixing nut
2. Coil
3. Plunger
4. Armature tube with core



OVERALL DIMENSION

